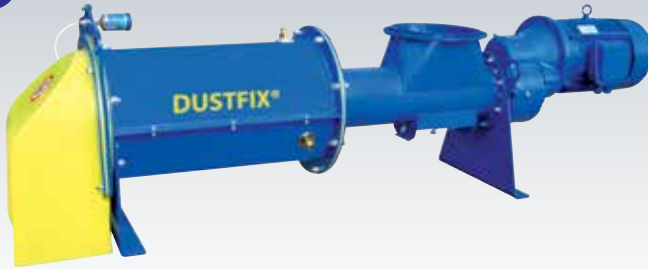


Asphalt Mixing

DUSTFIX® Dust Conditioners

24



Description ▼

DUSTFIX® Dust Conditioners consist of a carbon steel tubular casing with SINT® engineering polymer liner, a combined feeder screw/mixing shaft entirely manufactured from SINT® engineering polymer, one vertical inlet and a flush outlet in SINT®, a liquid supply point in the conditioning section, a drive unit with integrated adjustable shaft sealing unit.

Function ▼

In terms of function and economy, the DUSTFIX® Dust Conditioner is a machine for moistening / conditioning and disposal of filler dust and avoid environmental pollution. Due to its particular technical features, the use of innovative SINT® engineering polymers and extremely short processing time, DUSTFIX® is suitable for continuous duty.



Application ▼

The DUSTFIX® conditioning system for asphalt mixing plants ensures dust-free disposal on open truck or belt conveyor.

Benefits ▼

- ✓ Quick return on investment;
- ✓ High-speed conditioning;
- ✓ Minimum wear;
- ✓ Easy to install;
- ✓ Low maintenance;
- ✓ Attractive price.

Asphalt Mixing

DUSTFIX® Dust Conditioners

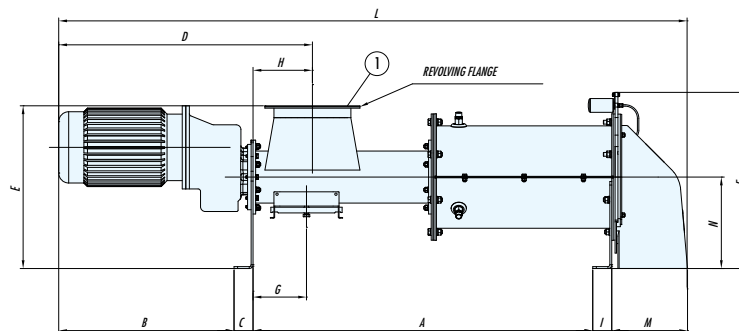


Technical Features / Performance ▼

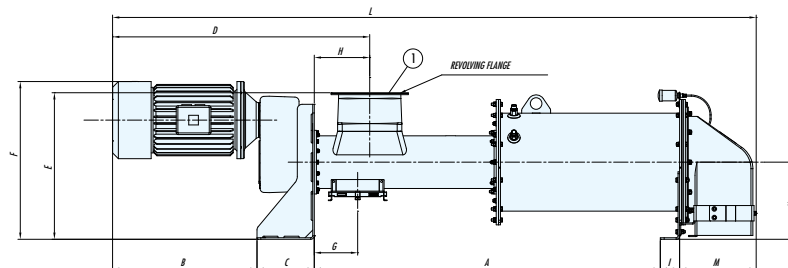
- ▶ From 20 up to 80 m³/h
- ▶ Electric control panel
- ▶ Water supply panel
- ▶ Antiwear materials

Overall Dimensions ▼

DUSTFIX® 20 / DUSTFIX® 40



DUSTFIX® 80



TYPE	A	B	C	D	E	F	G	H	I	L	M	N	kW	kg	m ³ /h
DUSTFIX 20	1,023.5	584	83	900	570	559	225	250	83	2045,5	258	300	5.5-7.5-9.2	265	20
DUSTFIX 40	1430	738	80	1,068	685	741	225	250	80	2,645	319	385	15-22	490	40
DUSTFIX 80	1,794.5	749	297	1,333.5	760	774	225	287.5	100	3,338	380	400	30	850	80

Dimensions in mm